

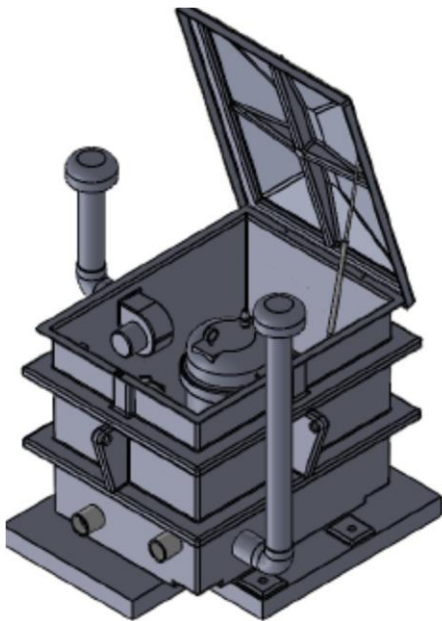
Aquatic Parts
and
Accessories

FountainTek

2023 product catalog 8-15-23

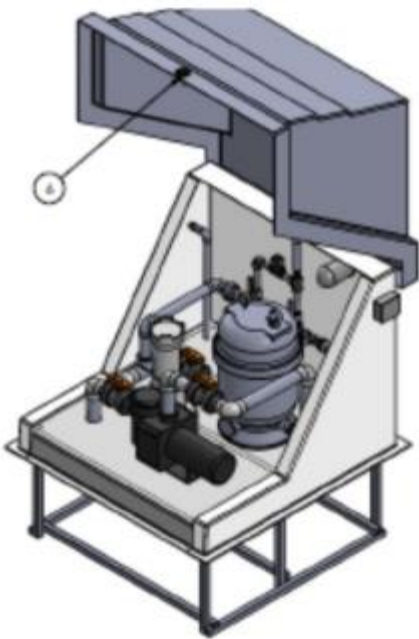
Take a closer look;

Fountain Equipment Vaults Filter Tanks Collector Tanks / Parts plus



thesoutheasterngroup.com/aquatic-parts-accessories.htm

mcwseg@gmail.com



On-Grade Systems



In-Ground Surge Tanks



Main Drain Sumps

Collector tank parts / valves, auto fill

AP-FWT \$135



Fresh Water 1 in Toro Valve



AP-FWT-H \$165

**Fresh Water 1 in Toro Valve
assy. w/ water hammer**



AP-FWHBB \$35
Brass Hose Bibb

AP-FWVBV \$16
Brass Vacuum Breaker



AP-FWTVA **\$280**

Fresh Water Toro Valve Manifold (shipped boxed knocked down)

1 in Toro valve, $\frac{3}{4}$ in hose bib with vac breaker, 6ft black tubing, all other necessary fitting as shown



AP-WBFA **\$240**

Roberts Style $\frac{3}{4}$ in MPT plastic auto fill valve assembly, 16 in stainless steel rod, float ball, hose bibb w/ vacuum breaker (shipped boxed knocked down)

AP-FWPV **\$72**

Roberts Style $\frac{3}{4}$ in MPT plastic valve

AP-FWPV-B **\$40**

6 in plastic float ball

AP-FWBSS-16 **\$21**

16 n stainless steel ball float rod



AP-FTA **\$280**

Float Tray Assembly compression union, float tray, 5 ft tubing and fittings

(shipped boxed knocked down)

AP-FTT tubing per foot **\$4**



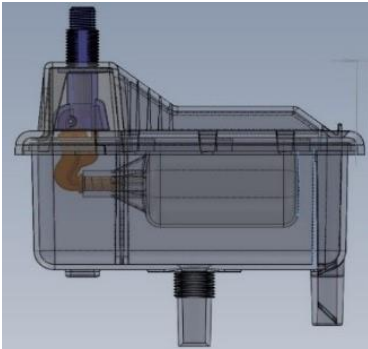
Pricing may change without notice

AP-CF Compression Union fitting with gasket **\$40**



AP-TVRI **\$55** Repair Insert
(threaded rod guide
machined solid plastic

AP-TVH **\$50**
Tank Valve Handel



AP-FT

\$78

Water Level Clear Float Tray NSF listed
Length 6 in x Width 2.5 in x Height 4 in

Cabinet and Tank LID LIFTERS

| | | |
|--------------------|-------------------------------------|-------------------|
| AP-LL | 50lb or 100 lb Gas Shock Lid Lifter | \$275 each |
| AP-LL-H | Stainless Steel Hardware kit | \$170 each |
| AP-LL-Hinge | Clear swing SS lid hinge | \$ 75 each |

Gauges Pressure and Vacuum

Stainless Steel Liquid filled

| | | |
|--------------|---|-------------------|
| AP-PG | Pressure Gauge 2.5 in dia. w/ $\frac{1}{4}$ in brass NPT | \$ 65 each |
| AP-VG | Vacuum Gauge 2.5 in dia. w/ $\frac{1}{4}$ in brass NPT | \$ 65 each |

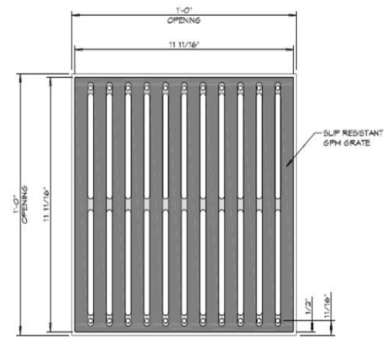
Main Drain Sump



FRP Sump with waterstop



VGB Frame and Grate



IWF Frame and Flat Grate

MAIN DRAIN SUMPS - heavy-duty fiberglass main drain sumps are Built to NSF Certified to ASME A112.19.8a 2008 and NSF / SOFA. Saves hours of forming and eliminates potential leaks. Fabricated with a smooth white NSF gelcoat interior and thick-strong resin / fiberglass exterior.

MD9-12 Main drain sump 9x9x12 \$ 375

Fiberglass sump / sch 40 coupling fittings 3 in side 2 in bottom

MD12-12 Main drain sump 12x12x12 \$ 410

Fiberglass sump / sch 40 coupling fittings 4 in side 2 in bottom

MD12-18 Main drain sump 12x12x18 \$ 600

Fiberglass sump / sch 40 coupling fittings 6 in side 2 in bottom

MD12-24 Main drain sump 12x12x24 \$ 700

Fiberglass sump water stop / sch 40 coupling fittings 8 in side 2 in bottom

MD18-24 Main drain sump 18x18x24 \$ 1,200

Fiberglass sump water stop / sch 40 coupling fittings 8 in side 2 in bottom

MD24-24 Main drain sump 24x24x24 \$ 1,475

Fiberglass sump water stop / sch 40 coupling fittings 8 in side 2 in bottom

MD18-36 Main drain sump 18x36x24 \$ 1,525

Fiberglass sump water stop / sch 40 coupling fittings 8 in side 2 in bottom

MD18-36 Main drain sump 18x36x28 \$ 1,675

Fiberglass sump water stop / sch 40 coupling fittings 10 in side 2 in bottom

Backwash Sumps available; 9x9x12 \$325 12x12x12 \$350 12x12x18 \$550 18x18x24 \$1,150 24x24x24 \$1,425



WaterStop PVC Coupling fittings

built to order, email for pricing

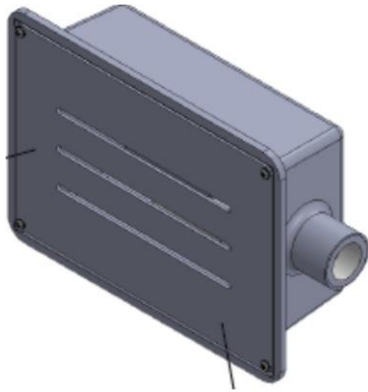
FOB Pool Equipment Systems factory Glasgow, KY

813-431-7063 office email mcwseg@gmail.com

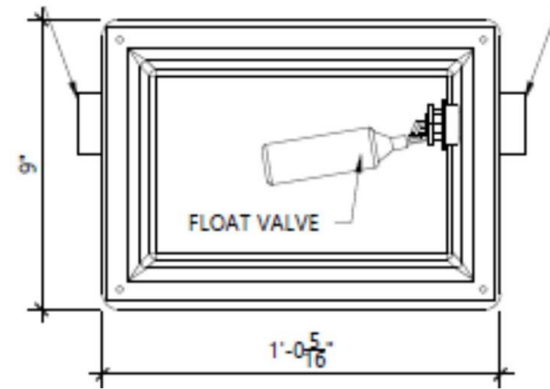
Pricing may change without notice

Page 5

Side Wall Auto Fill



FT-SWAF



\$480

Fiberglass body, Plastic front plate **BLACK**, float valve assy, 1" fresh water, 1" over flow slip female connection

AP-SWFVA

\$ 36

Adjustable float valve assy

Additional front plate plastic

colors - gray, white, tan and **Aluminum powder coated**

Port-O Vac Systems

Sturdy & easy to roll on pool deck

Portable Vac System Sturdy & easy to roll on pool deck

AP-PVS-75 30 ft power cord GFCI,
1 hp pump, 75 cartridge filter **\$ 2,145**
System complete

AE-PVS-100 30 ft power cord GFCI,
1.5 hp pump, 100 cartridge filter **\$ 2,28**
System complete



Zapp Pure clean water system **UV System tm**

- Simple
- Effective
- Safe
- low maintenance
- clean water
- energy saving

Specifications Stainless Steel polished or brushed finish **Standard 110v power with GFIC protector**. UL power cord 12 ft, 2" and 3" inlet / outlet, 4" and 6" Diameter, no flow restriction / High Intensity UV lamp, Quartz Sleeve, Aluminum heat sink Leak/Tight fitting, makes Lamp changing is easy - takes only minutes.



ETL / NSF applied / pending net pricing / call for volume pricing

| | | | | |
|-------------|----------------|------|--------|----------|
| AP-ZP1200-1 | 4in dia x 12in | 2 in | 35GPM | \$ 1,532 |
| AP-ZP2400-1 | 4in dia x 12in | 2 in | 68GPM | \$ 1,735 |
| AP-ZP2400-2 | 4in dia x 12in | 3 in | 68GPM | \$ 2,045 |
| AP-ZP3300-1 | 4in dia x 12in | 2 in | 80GPM | \$ 2,245 |
| AP-ZP3300-2 | 4in dia x 12in | 3 in | 100GPM | \$ 2,465 |
| AP-ZP4400-1 | 4in dia x 12in | 3 in | 135GPM | \$ 2,635 |
| AP-ZP8800-2 | 4in dia x 12in | 3 in | 170GPM | \$ 3,470 |

NOTE- email for your discount mcwseg@gmail.com

Zapp Heat Digital Energy Efficient Trouble Free



ETL applied / pending

| | | | |
|-------|--------|---------------------|---------|
| ZH-11 | 11 KW | Digital Zapp Heater | \$1,979 |
| ZH-6 | 6 KW | Digital Zapp Heater | \$1,602 |
| ZH-1 | 1.5 KW | Digital Zapp Heater | \$1,472 |

Zapp Pre-Filter

| | | |
|---------|------------------------|---------|
| ZP-PF-2 | Zapp SS Pre-Filter 2in | \$1,324 |
| ZP-PF-3 | Zapp SS Pre-Filter 3in | \$1,386 |



| | | |
|----------|------------------------------|-------|
| ZP-PF-RG | 3in Inlet-Outlet Ring Gasket | \$ 79 |
|----------|------------------------------|-------|

Support, Pricing and Terms of sale POLICY

Our wholesale pricing is designed to simplify customer communications.

PRICING: Wholesale List pricing Catalog

Your cost discount x . _____

territory manager _____

& cell # _____

for shop drawing, design or tech support

contact office (813) 431-7063

or email: mcwseg@gmail.com

REQUEST - Samples, Marketing Product catalogs, Trade show - **email:** mcwseg@gmail.com

TERMS: Dealers/Contractors check or credit card with PO / order
(credit card payment subject to standard . 035% CC charge)

FREIGHT: FOB factory - email for freight quotes mcwseg@gmail.com

ORDERS: To place an order and check inventory availability

Call (817) 573-2012 or e-mail: connie@thesoutheasterngroup.com

WARRANTY: All products in this catalog are covered by our 1 year

RETURNS; Accepted with **50% restocking** and freight

TECH SUPPORT; 9 am - 5 pm EST **email** - mcwseg@gmail.com

REMEMBER If you can't find it here,
tell us what you need,
We'll find it or We'll make it !!

Office - (817) 572-2012
theSouthEasternGroup.com



Established 1998

